

## TRANSPORTATION SAFETY

### ARRIVE SAFELY



### Tips for Parents and Drivers

#### Discussion points for children about riding the bus:

- **Be at the bus stop early so you do not have to rush to catch the bus.**
- **Practice safe behavior at the bus stop. Do not bring bikes, scooters, balls, etc. Do not run into the street.**
- **Look both ways before getting onto the bus.**
- **Be respectful to the bus driver.**
- **Stay in your seat for the entire ride. When leaving the bus, keep it as clean as when you found it.**

### Best practices for drivers

- **Pay attention when driving, especially in school zones and during times of day when school buses are typically on routes.**
- **Stop when a bus stops. It is illegal to pass a school bus with its red lights flashing.**

- **Prepare to stop when the school bus flashes its yellow lights, and be cautious of students beginning to move toward the bus during these times.**
- **Students of all ages are unpredictable. Therefore, prepare for the unexpected and maintain a safe distance from school buses at all times.**

# Safe Schools MD Reporting System

Anonymous reports can be submitted by...



Calling  
1-833-MD-B-SAFE



Visiting  
SafeSchoolsMD.org



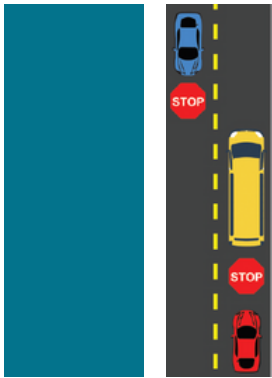
Using the  
App



## Driver Responsibilities

Drivers must stop at least 20 feet from a school bus with the stop arm extended and the red lights flashing. Do not pass the bus from any direction until the stop signals are off and the bus is moving again.

### TWO-LANE



Vehicles traveling in both directions **MUST STOP.**

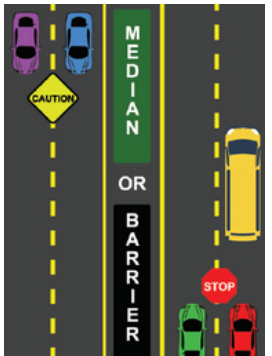
### TWO-LANE

### with Center Turn Lane



Vehicles traveling in both directions **MUST STOP.**

### DIVIDED HIGHWAY



Vehicles behind the bus **MUST STOP.** If traveling in the opposite direction use **CAUTION.**

### MULTI-LANE



Vehicles traveling in both directions **MUST STOP.**

For Additional SSMD Resources Go To [SchoolSafety.maryland.gov](http://SchoolSafety.maryland.gov)