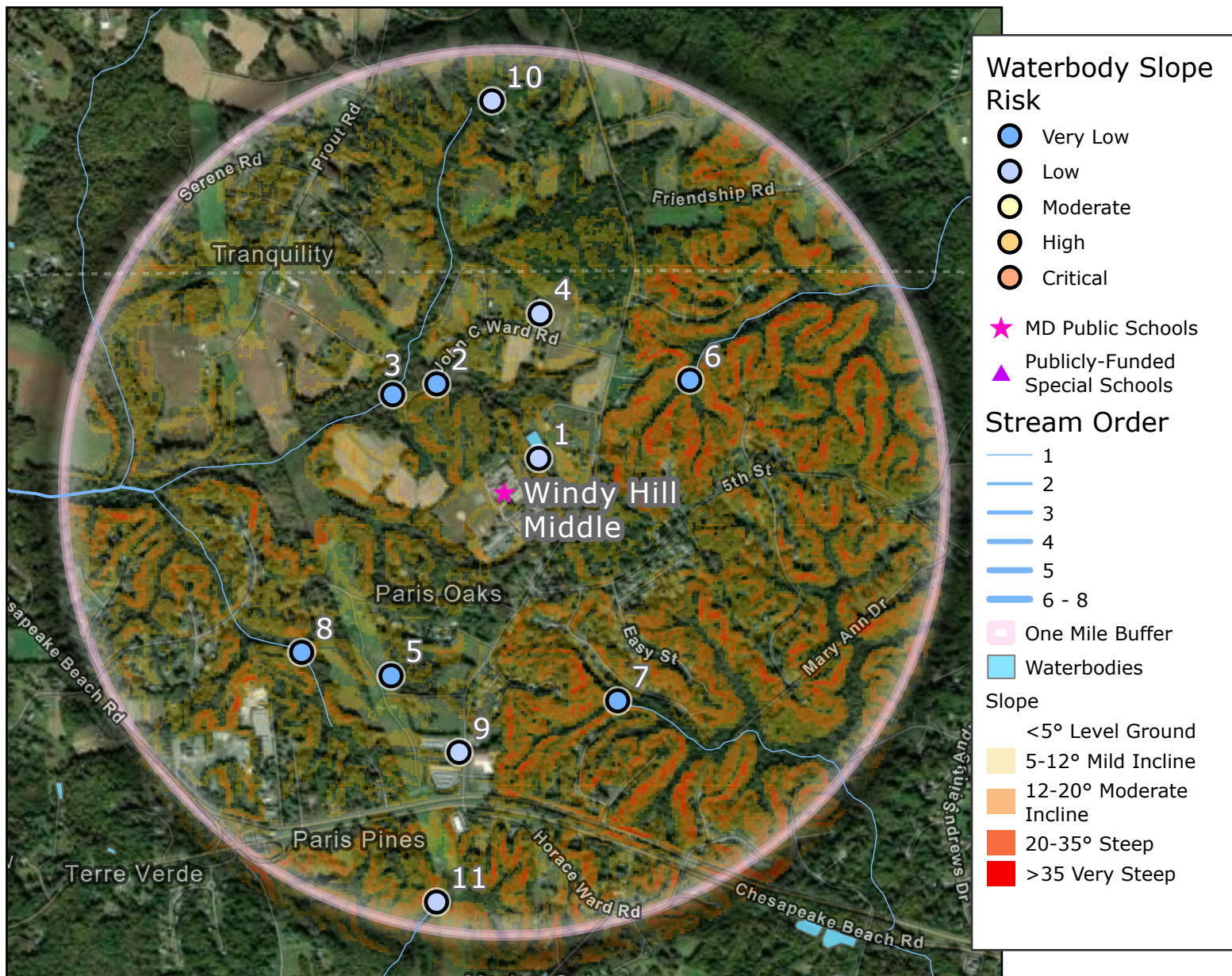


# Windy Hill Middle, Calvert County



## Nearby Water Hazards in order of Distance

- #1 [38.7152, -76.57048] Unnamed Pond, a Lake/Pond, 0.11 miles Northeast. Slope Risk level: 2 (Low)
- #2 [38.7176, -76.57475] Unnamed Pond, a Lake/Pond, 0.29 miles Northwest. Slope Risk level: 1 (Very Low)
- #3 [38.7173, -76.5766] Hall Creek, a Stream/River, 0.34 miles Northwest. Slope Risk level: 1 (Very Low)
- #4 [38.7199, -76.57042] Unnamed Pond, a Lake/Pond, 0.41 miles North. Slope Risk level: 2 (Low)

- #5 [38.7081, -76.57667] Unnamed Pond, a Lake/Pond, 0.49 miles Southwest. Slope Risk level: 1 (Very Low)
- #6 [38.7178, -76.56414] Red Lyon Creek, a Stream/River, 0.49 miles Northeast. Slope Risk level: 1 (Very Low)
- #7 [38.7073, -76.56716] Local Stream Segment, a Stream/River, 0.54 miles Southeast. Slope Risk level: 1 (Very Low)
- #8 [38.7089, -76.58042] Minor Branch of Hall Creek, a Stream/River, 0.58 miles Southwest.

For the full listing of water hazards within one mile of Maryland Public Schools, visit the Maryland Waterbodies Near Schools map tool, a collaboration of MCSS and MDEM: <https://schoolsafety.maryland.gov/waterbodies>